



Het beste tussen u en de zon!

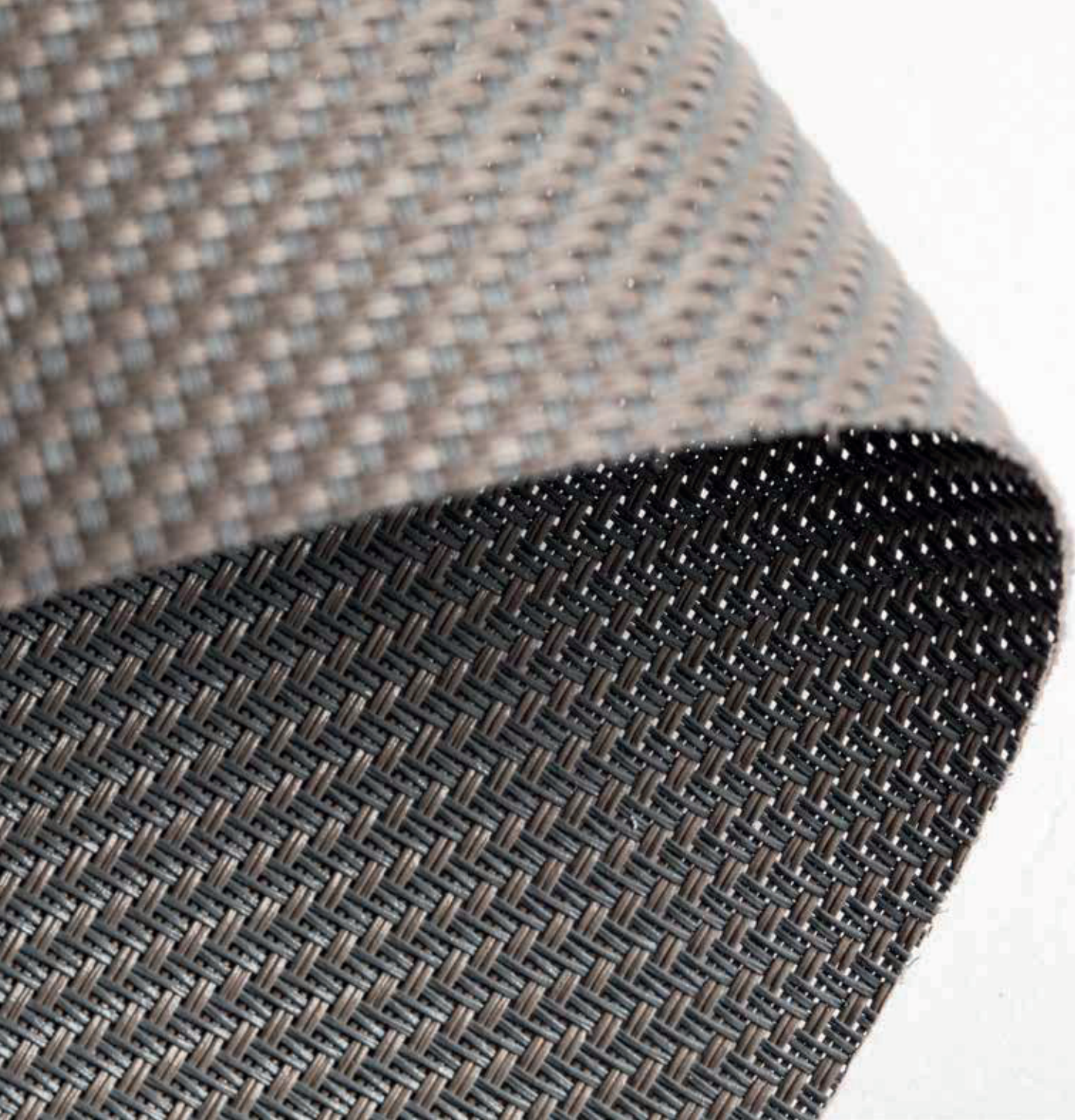


Screeendoeken
Copaco Sergé 600

WWW.BYMICHEL.NL

**Screens that
reflect & absorb
solar energy
outside the house.
Meet OUT.**



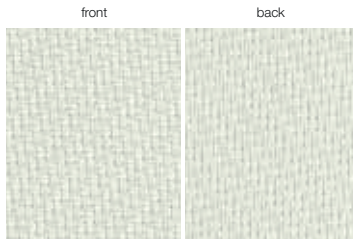




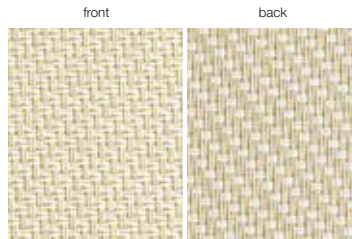
Serge 600



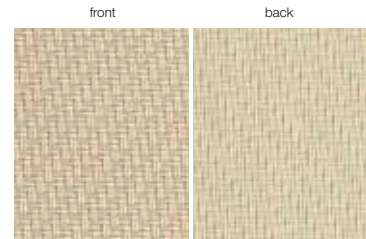
Colours & references



Serge 600 002002 white | white



Serge 600 008002 linen | white



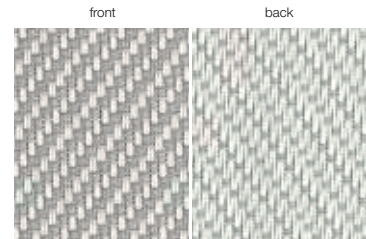
Serge 600 008008 linen | linen



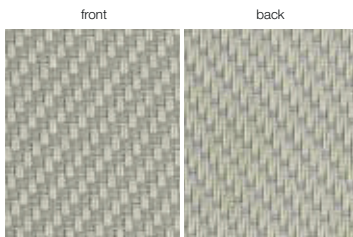
Serge 600 003003 sand | sand



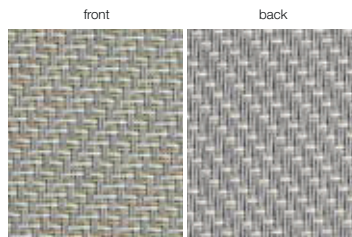
Serge 600 003002 sand | white



Serge 600 002007 white | pearl grey



Serge 600 008007 linen | pearl grey



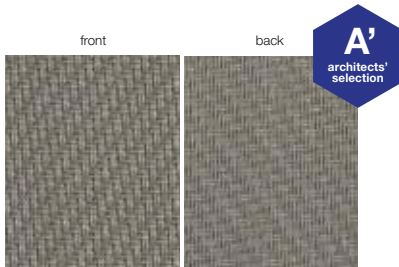
Serge 600 007082 pearl grey | white-sand



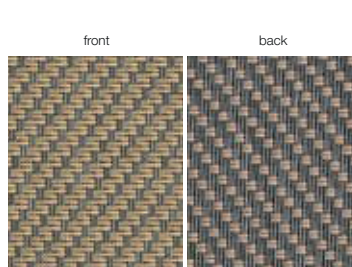
Serge 600 008003 linen | sand

GLASSFIBRE

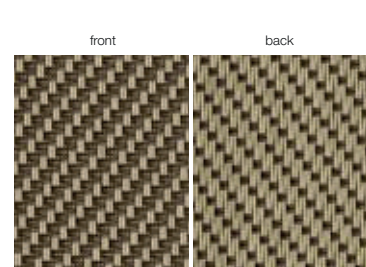
OF = 5%



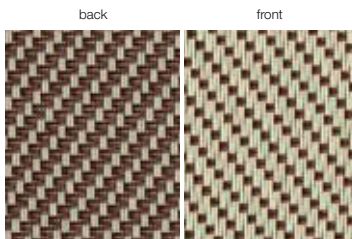
Serge 600 033033 sandstone



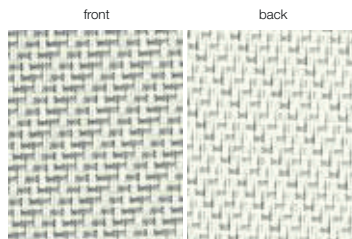
Serge 600 001003 grey | sand



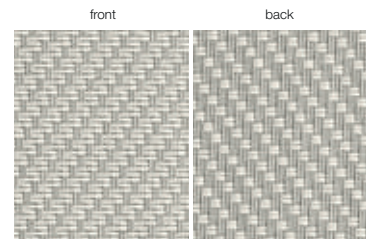
Serge 600 003011 sand | bronze



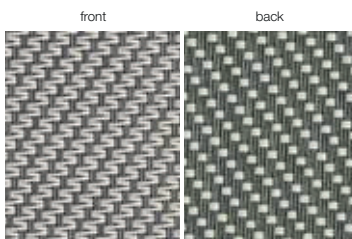
Serge 600 008016 linen | bordeaux



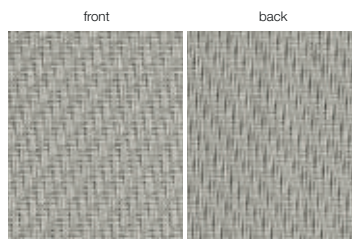
Serge 600 002061 white | white-pearl grey



Serge 600 007002 pearl grey | white



Serge 600 001002 grey | white



Serge 600 007007 pearl grey | pearl grey



Serge 600 033001 oyster shell

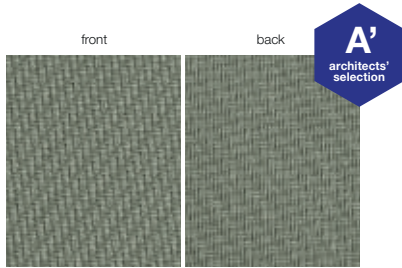




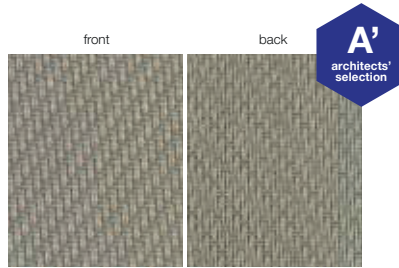
Serge 600



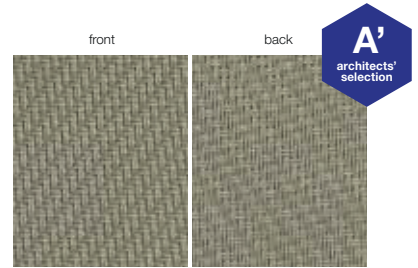
Colours & references



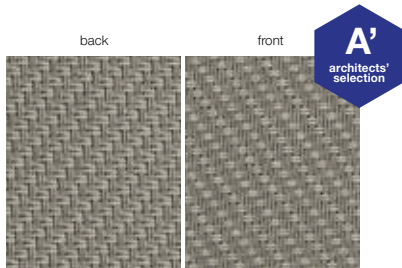
Serge 600 031031 jade river



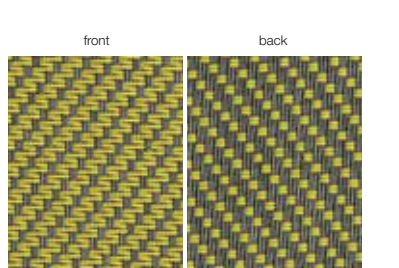
Serge 600 032031 duck egg



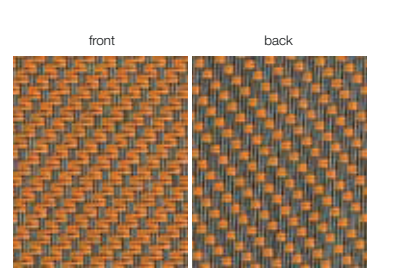
Serge 600 032032 wet sand



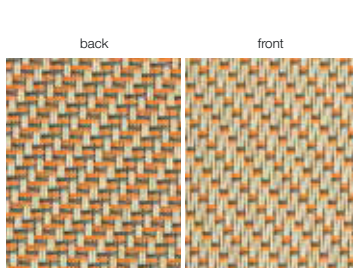
Serge 600 033032 soft clay



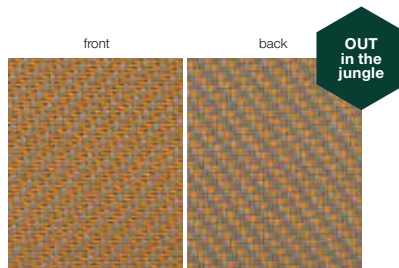
Serge 600 001006 grey | yellow



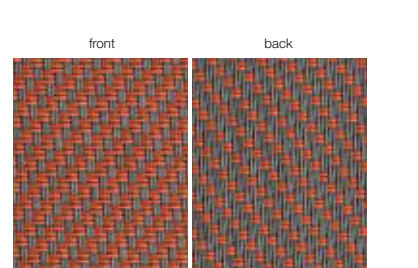
Serge 600 001004 grey | gold



Serge 600 008079 linen | grey-gold



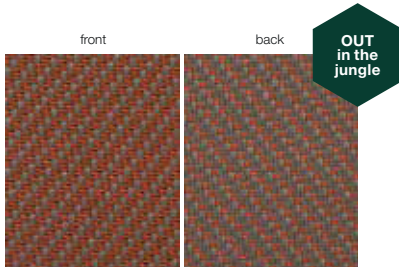
Serge 600 032040 mango



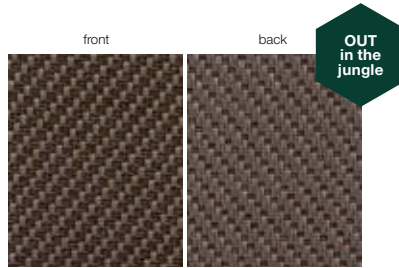
Serge 600 001005 grey | mandarin

GLASSFIBRE

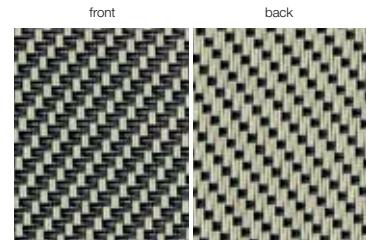
OF = 5%



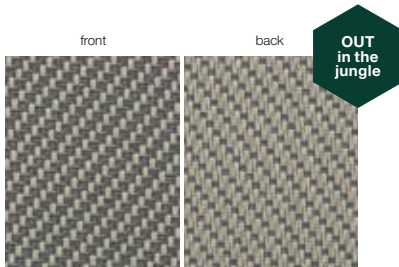
Serge 600 033041 maroon



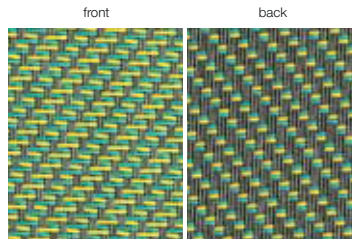
Serge 600 001045 coconut



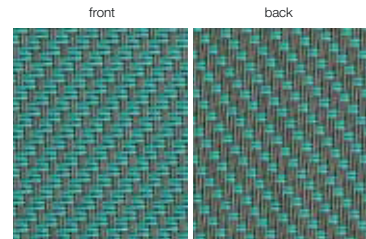
Serge 600 008015 linen | lichen



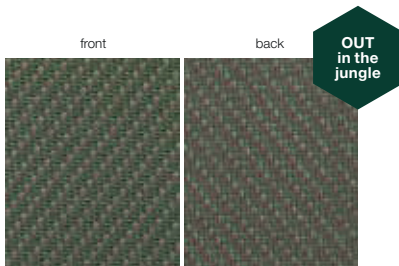
Serge 600 008001 safari



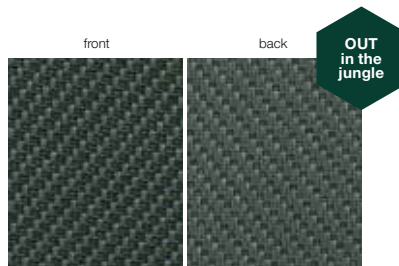
Serge 600 001074 grey | yellow-green



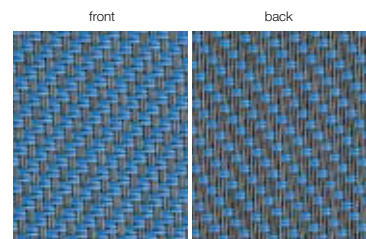
Serge 600 001012 grey | green



Serge 600 033043 moss



Serge 600 001044 palm



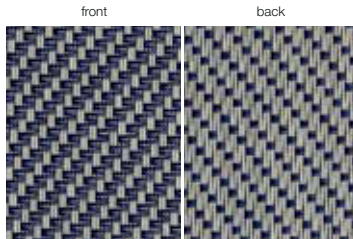
Serge 600 001014 grey | turquoise



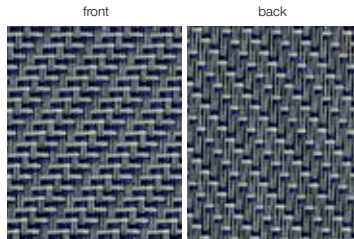
Serge 600



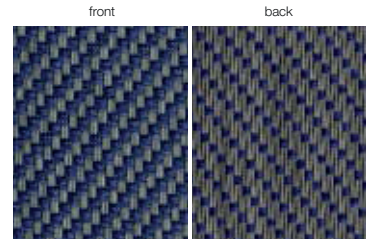
Colours & references



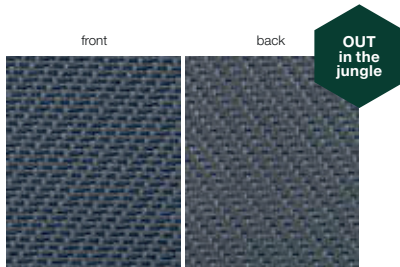
Serge 600 007009 pearl grey | blue azure



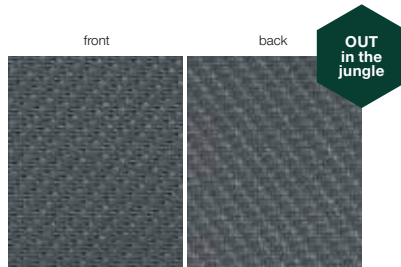
Serge 600 001070 grey | pearl grey-blue azure



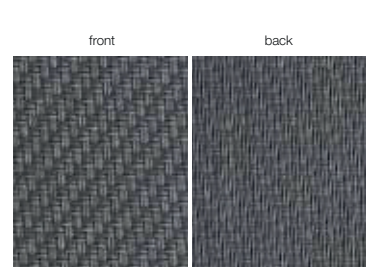
Serge 600 001009 grey | blue azure



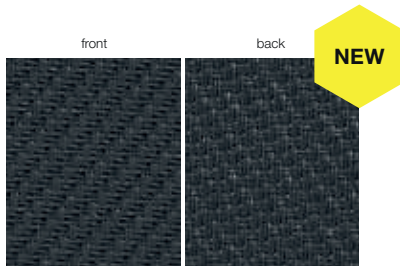
Serge 600 001094 lagoon



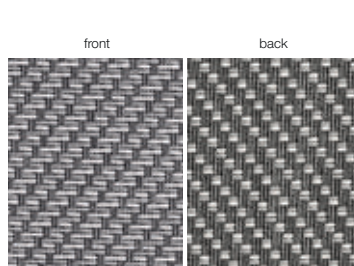
Serge 600 001042 shade



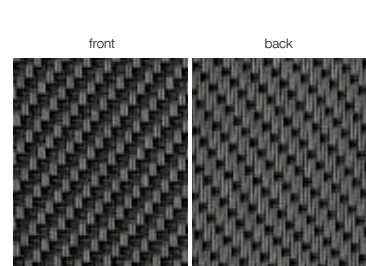
Serge 600 001001 grey | grey



Serge 600 047047 anthracite grey



Serge 600 001061 grey | white-pearl grey



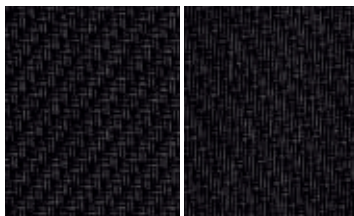
Serge 600 001010 grey | charcoal

GLASSFIBRE

OF = 5%

front

back



Serge 600 010010 charcoal | charcoal

front

back



Serge 600 030030 pure black | pure black

Serge 600		50 m roll					30 m roll	
		160 cm	190 cm	220 cm	250 cm	270 cm	320 cm	350 cm
colour	code							
grey / grey	001001	•	•	•	•	•	•	
grey / white	001002	•	•	•	•	•	•	
grey / sand	001003	•	•	•	•	•		
grey / gold	001004	•	•	•	•	•		
grey / mandarin	001005	•	•	•	•	•		
grey / yellow	001006	•	•	•	•	•		
grey / blue azure	001009	•	•	•	•	•		
grey / charcoal	001010	•	•	•	•	•	•	
grey / green	001012	•	•	•	•	•		
grey / turquoise	001014	•	•	•	•	•		
shade	001042			•		•		
palm	001044			•		•		
coconut	001045			•		•		
grey / white-pearl grey	001061	•	•	•	•	•		
grey / pearl grey-blue azure	001070	•	•	•	•	•		
grey / yellow-green	001074	•	•	•	•	•		
lagoon	001094			•		•		
white / white	002002		•	•	•	•	•	
white / pearl grey	002007		•	•	•	•		
white / white-pearl grey	002061				•	•		
sand / white	003002			•	•	•		
sand / sand	003003			•	•	•		
sand / bronze	003011			•	•	•		



Serge 600



front

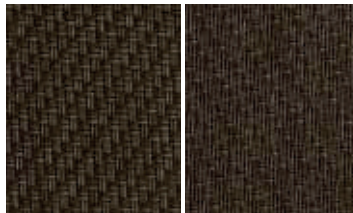
back



Serge 600 010011 charcoal | bronze

front


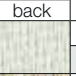

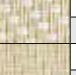





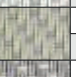


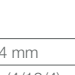

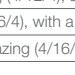
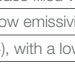


back



Serge 600 011011 bronze | bronze

Serge 600		50 m roll					30 m roll	
		160 cm	190 cm	220 cm	250 cm	270 cm	320 cm	350 cm
colour	code							
pearl grey / white	007002			•	•	•	•	
pearl grey / pearl grey	007007		•	•	•	•	•	
pearl grey / blue azure	007009			•	•	•	•	
pearl grey / white-sand	007082				•	•	•	
linen / white	008002		•	•	•	•	•	
linen / sand	008003				•	•		
linen / pearl grey	008007				•	•		
linen / linen	008008		•	•	•	•	•	
linen / lichen	008015				•	•		
linen / bordeaux	008016				•	•		
linen / grey-gold	008079				•	•		
safari	008001			•		•	•	
charcoal / charcoal	010010	•	•	•	•	•	•	
charcoal / bronze	010011		•	•	•	•	•	
bronze / bronze	011011		•	•	•	•		
pure black / pure black	030030					•	•	
jade river	031031			•		•		
duck egg	032031			•		•	•	
wet sand	032032			•		•	•	
mango	032040			•		•	•	
oyster shell	033001			•		•	•	
soft clay	033032			•		•	•	
sandstone	033033			•		•	•	
maroon	033041			•		•	•	
moss	033043			•		•	•	
anthracite grey	047047					•	•	

Solar energetic properties

Serge 600 European Standard EN 14501 Calculation G-value according to EN 13363-1 version 7.0				SOLAR ENERGETIC PROPERTIES												VISUAL PROPERTIES	
				FABRIC			FABRIC + GLAZING										
							EXTERIOR			INTERIOR							
							G-factor = total solar energy transmittance										
references	colours	front	back	As = Solar Absorbance %	Fs = Solar Reflectance %	Ts = Solar Transmittance %	Glazing A - Gv = 0,85 - U = 5,8	Glazing B - Gv = 0,76 - U = 2,9	Glazing C - Gv = 0,59 - U = 1,2	Glazing D - Gv = 0,32 - U = 1,1	Glazing A - Gv = 0,85 - U = 5,8	Glazing B - Gv = 0,76 - U = 2,9	Glazing C - Gv = 0,59 - U = 1,2	Glazing D - Gv = 0,32 - U = 1,1	Tv = Visible Light Transmittance %	Tuv = UV Transmittance %	
002002	white white			front	13,2	65,9	21,0	0,22	0,20	0,15	0,10	0,36	0,37	0,36	0,25	21,2	4,3
				back	12,7	66,3	21,0	0,22	0,19	0,15	0,10	0,35	0,37	0,36	0,25	21,2	4,3
008002	linen white			front	26,4	58,2	15,5	0,20	0,17	0,13	0,09	0,39	0,41	0,38	0,26	13,7	5,3
				back	28,1	56,4	15,5	0,20	0,17	0,13	0,09	0,40	0,42	0,39	0,26	13,7	5,3
008008	linen linen			front	32,5	52,5	14,9	0,21	0,17	0,13	0,09	0,43	0,43	0,40	0,26	12,9	5,8
				back	32,4	52,7	14,9	0,20	0,17	0,13	0,09	0,42	0,43	0,40	0,26	12,9	5,8
003003	sand sand			front	54,1	36,5	9,4	0,20	0,16	0,11	0,09	0,51	0,51	0,45	0,28	7,7	4,9
				back	53,6	37,0	9,4	0,20	0,16	0,11	0,08	0,51	0,51	0,45	0,28	7,7	4,9
003002	sand white			front	39,1	49,2	11,7	0,19	0,16	0,11	0,08	0,44	0,45	0,41	0,27	10,2	4,9
				back	43,6	44,6	11,7	0,20	0,17	0,12	0,09	0,47	0,47	0,42	0,27	10,2	4,9
002007	white pearl grey			front	40,9	47,6	11,5	0,19	0,16	0,11	0,08	0,45	0,46	0,42	0,27	10,7	6,0
				back	33,2	55,3	11,5	0,18	0,15	0,11	0,08	0,40	0,42	0,39	0,26	10,7	6,0
008007	linen pearl grey			front	45,7	43,5	10,8	0,20	0,16	0,11	0,08	0,47	0,48	0,43	0,27	9,1	5,0
				back	42,1	47,1	10,8	0,19	0,16	0,11	0,08	0,45	0,46	0,42	0,27	9,1	5,0
007082	pearl grey white-sand			front	48,7	42,6	8,7	0,18	0,15	0,10	0,08	0,48	0,48	0,43	0,27	7,8	6,1
				back	52,4	38,9	8,7	0,19	0,15	0,10	0,08	0,50	0,50	0,44	0,27	7,8	6,1
008003	linen sand			front	49,3	43,9	6,8	0,17	0,13	0,09	0,07	0,46	0,47	0,43	0,27	4,9	2,0
				back	44,9	48,3	6,8	0,16	0,13	0,08	0,07	0,44	0,45	0,41	0,27	4,9	2,0

GLAZING A = clear single glazing 4 mm	Gv = 0,85
GLAZING B = clear double glazing (4/12/4), space filled with air	Gv = 0,76
GLAZING C = double glazing (4/16/4), with a low emissivity coating in position 3, space filled with argon	Gv = 0,59
GLAZING D = reflective double glazing (4/16/4), with a low emissivity coating in position 2, space filled with argon	Gv = 0,32



Serge 600



Solar energetic properties

Serge 600 European Standard EN 14501 Calculation G-value according to EN 13363-1 version 7.0		SOLAR ENERGETIC PROPERTIES														VISUAL PROPERTIES	
		FABRIC			FABRIC + GLAZING												
					EXTERIOR					INTERIOR							
					G-factor = total solar energy transmittance												
references	colours	front	back	As = Solar Absorbance %	Rs = Solar Reflectance %	Ts = Solar Transmittance %	Glazing A - Gv = 0,85 - U = 5,8	Glazing B - Gv = 0,76 - U = 2,9	Glazing C - Gv = 0,59 - U = 1,2	Glazing D - Gv = 0,32 - U = 1,1	Glazing A - Gv = 0,85 - U = 5,8	Glazing B - Gv = 0,76 - U = 2,9	Glazing C - Gv = 0,59 - U = 1,2	Glazing D - Gv = 0,32 - U = 1,1	Tv = Visible Light Transmittance %	Tuv = UV Transmittance %	
033033	sandstone	front		front	72,4	20,5	7,1	0,22	0,17	0,11	0,09	0,60	0,59	0,50	0,29	6,8	6,6
		back		back	72,5	20,4	7,1	0,22	0,17	0,11	0,09	0,60	0,59	0,50	0,29	6,8	6,6
001003	grey sand	front		front	68,8	26,5	4,7	0,19	0,15	0,09	0,08	0,56	0,56	0,48	0,29	4,5	3,9
		back		back	73,8	21,5	4,7	0,20	0,15	0,10	0,08	0,59	0,59	0,50	0,29	4,5	3,9
003011	sand bronze	front		front	73,2	21,1	5,7	0,21	0,16	0,10	0,09	0,60	0,59	0,50	0,29	5,0	4,0
		back		back	66,3	28,0	5,7	0,19	0,15	0,10	0,08	0,56	0,55	0,48	0,28	5,0	4,0
008016	linen bordeaux	front		front	63,4	26,1	10,5	0,23	0,19	0,13	0,10	0,57	0,57	0,48	0,29	8,4	4,2
		back		back	54,3	35,3	10,5	0,21	0,17	0,12	0,09	0,52	0,52	0,45	0,28	8,4	4,2
002061	white white-pearl grey	front		front	27,7	59,8	12,4	0,17	0,15	0,11	0,08	0,38	0,40	0,38	0,26	11,6	3,4
		back		back	23,4	64,2	12,4	0,16	0,14	0,10	0,07	0,35	0,37	0,36	0,25	11,6	3,4
007002	pearl grey white	front		front	37,4	50,9	11,7	0,19	0,16	0,11	0,08	0,43	0,44	0,40	0,26	9,9	5,4
		back		back	41,4	46,9	11,7	0,19	0,16	0,11	0,08	0,45	0,46	0,42	0,27	9,9	5,4
001002	grey white	front		front	56,2	37,2	6,7	0,18	0,14	0,09	0,08	0,50	0,51	0,45	0,28	6,6	5,5
		back		back	66,4	26,9	6,7	0,20	0,16	0,10	0,08	0,56	0,56	0,48	0,28	6,6	5,5
007007	pearl grey pearl grey	front		front	51,7	38,3	10,1	0,20	0,16	0,11	0,09	0,50	0,50	0,44	0,27	8,4	6,0
		back		back	50,5	39,4	10,1	0,20	0,16	0,11	0,09	0,50	0,50	0,44	0,27	8,4	6,0
033001	oyster shell	front		front	74,7	17,0	8,3	0,23	0,19	0,12	0,10	0,62	0,61	0,51	0,29	8,0	7,9
		back		back	73,3	18,4	8,3	0,23	0,18	0,12	0,10	0,62	0,60	0,51	0,29	8,0	7,9
031031	jade river	front		front	75,0	17,9	7,1	0,22	0,18	0,11	0,09	0,62	0,61	0,51	0,29	7,0	6,8
		back		back	75,0	17,9	7,1	0,22	0,18	0,11	0,09	0,62	0,61	0,51	0,29	7,0	6,8
032031	duck egg	front		front	70,4	22,5	7,1	0,21	0,17	0,11	0,09	0,59	0,58	0,50	0,29	6,6	6,2
		back		back	67,6	25,3	7,1	0,21	0,16	0,11	0,09	0,57	0,57	0,49	0,29	6,6	6,2

Solar energetic properties

Serge 600 European Standard EN 14501 Calculation G-value according to EN 13363-1+A1: 2007			SOLAR ENERGETIC PROPERTIES												VISUAL PROPERTIES		
			FABRIC			FABRIC + GLAZING											
						EXTERIOR			INTERIOR								
references	colours			As = Solar Absorbance %	Rs = Solar Reflectance %	Ts = Solar Transmittance %	G-factor = total solar energy transmittance									Tv = Visible Light Transmittance %	Tuv = UV Transmittance %
		front	back				Glazing A - Gv = 0,85 - U = 5,8	Glazing B - Gv = 0,76 - U = 2,9	Glazing C - Gv = 0,59 - U = 1,2	Glazing D - Gv = 0,32 - U = 1,1	Glazing A - Gv = 0,85 - U = 5,8	Glazing B - Gv = 0,76 - U = 2,9	Glazing C - Gv = 0,59 - U = 1,2	Glazing D - Gv = 0,32 - U = 1,1			
032032	wet sand	front	back	63,8	27,9	8,3	0,21	0,17	0,11	0,09	0,56	0,56	0,48	0,28	7,4	6,9	
		front	back	63,8	27,9	8,3	0,21	0,17	0,11	0,09	0,56	0,56	0,48	0,28	7,4	6,9	
033032	soft clay	front	back	67,5	24,7	7,8	0,21	0,17	0,11	0,09	0,58	0,57	0,49	0,29	7,3	7,0	
		front	back	69,7	22,5	7,8	0,22	0,17	0,11	0,09	0,59	0,58	0,50	0,29	7,3	7,0	
001006	grey yellow	front	back	64,6	29,0	6,4	0,20	0,15	0,10	0,08	0,55	0,55	0,47	0,28	6,2	4,4	
		front	back	71,4	22,2	6,4	0,21	0,16	0,11	0,09	0,59	0,58	0,50	0,29	6,2	4,4	
001004	grey gold	front	back	65,5	29,5	4,9	0,18	0,14	0,09	0,08	0,55	0,55	0,47	0,28	4,3	3,7	
		front	back	72,3	22,8	4,9	0,20	0,15	0,10	0,08	0,59	0,58	0,49	0,29	4,3	3,7	
008079	linen grey-gold	front	back	50,0	38,8	11,2	0,21	0,17	0,12	0,09	0,50	0,50	0,44	0,27	9,1	6,6	
		front	back	45,6	43,2	11,2	0,20	0,16	0,11	0,09	0,48	0,48	0,43	0,27	9,1	6,6	
032040	mango	front	back	56,8	34,2	9,0	0,20	0,16	0,11	0,09	0,52	0,52	0,46	0,28	6,8	5,9	
		front	back	59,6	31,4	9,0	0,20	0,16	0,11	0,09	0,52	0,52	0,46	0,28	6,8	5,9	
001005	grey mandarine	front	back	65,6	27,7	6,8	0,20	0,16	0,10	0,08	0,56	0,56	0,48	0,28	5,7	5,1	
		front	back	71,5	21,7	6,8	0,21	0,17	0,11	0,09	0,59	0,59	0,50	0,29	5,7	5,1	
033041	maroon	front	back	66,5	25,9	7,6	0,21	0,17	0,11	0,09	0,57	0,57	0,48	0,29	6,4	6,2	
		front	back	69,6	22,8	7,6	0,21	0,17	0,11	0,09	0,57	0,57	0,48	0,29	6,4	6,2	
001045	coconut	front	back	78,3	14,4	7,3	0,23	0,18	0,12	0,10	0,64	0,62	0,52	0,30	7,1	7,0	
		front	back	77,5	15,2	7,3	0,23	0,18	0,12	0,10	0,64	0,62	0,52	0,30	7,1	7,0	

GLAZING A = clear single glazing 4 mm	Gv = 0,85
GLAZING B = clear double glazing (4/12/4), space filled with air	Gv = 0,76
GLAZING C = double glazing (4/16/4), with a low emissivity coating in position 3, space filled with argon	Gv = 0,59
GLAZING D = reflective double glazing (4/16/4), with a low emissivity coating in position 2, space filled with argon	Gv = 0,32

A stylized silhouette of a horse's head and neck, facing right. The silhouette is white and set against a background of a sunset or sunrise over a field. The sun is a bright yellow starburst in the upper right, casting a warm glow. The sky is a gradient of orange and yellow, and the field below is a darker orange. The entire image is framed by a dark teal arch at the top and an orange band at the bottom.

By Michèl B.V.
De Hulst 19
5807 EW Oostrum
Nederland
Tel. +31 478 746 000
info@bymichel.nl

WWW.BYMICHEL.NL