



Het beste tussen u en de zon!



**NIEUW!**  
**Fast Lane**

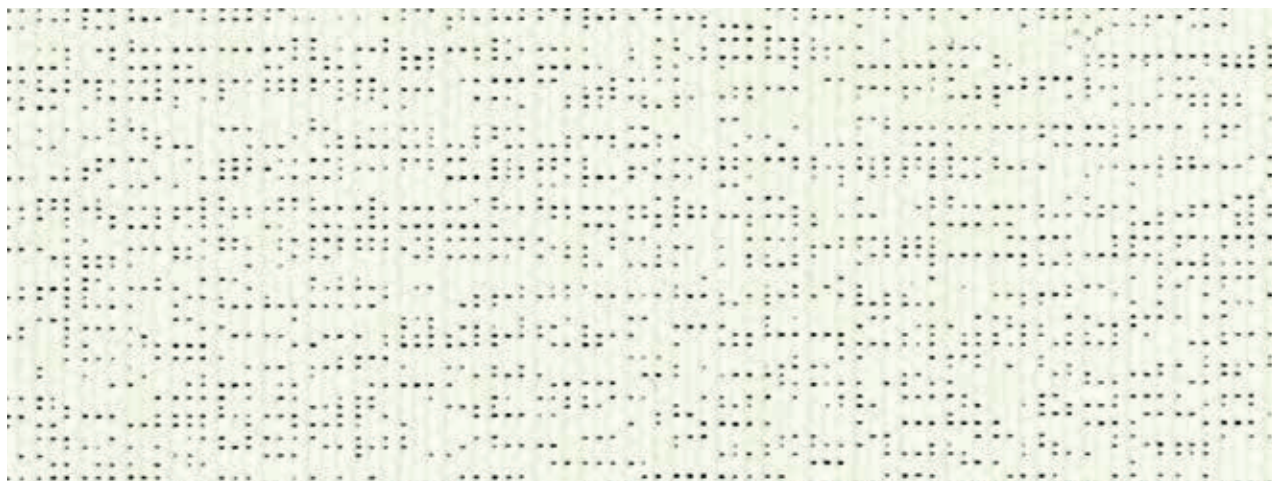
Binnen  
10 werkdagen  
geproduceerd

Screendoeken  
Soltis Perform 92

[WWW.BYMICHEL.NL](http://WWW.BYMICHEL.NL)



**Serge Ferrari** | Soltis  
**Perform 92**

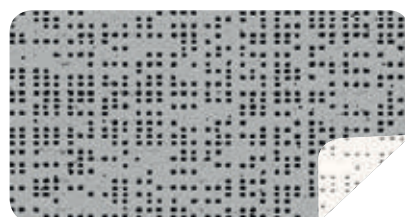


**new Snow white** 177 cm — 267 cm

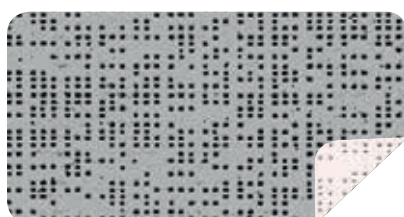
92-50690



**White** 177 cm — 267 cm 92-2044



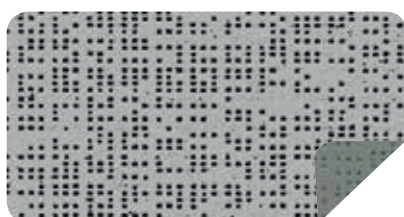
**Alu/White** 177 cm — 267 cm 92-2051



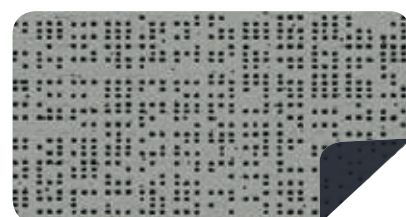
**Alu/Oat** 177 cm — 267 cm 92-2046



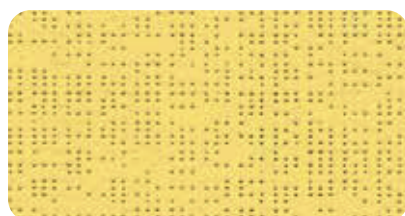
**Alu/Alu** 177 cm — 267 cm 92-2048



**Alu/Medium grey** 177 cm — 267 cm 92-2074



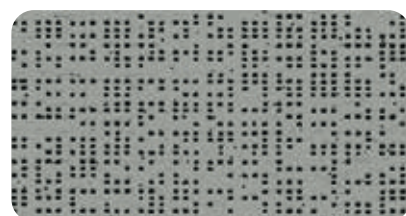
**Alu/Anthracite** 177 cm 92-2068



**Gold** 177 cm 92-50273



**Copper** 177 cm 92-50274



**Beaten metal** 177 cm — 267 cm 92-2045



**Bronze** 177 cm — 267 cm 92-2043



**Beetle** 177 cm 92-2149

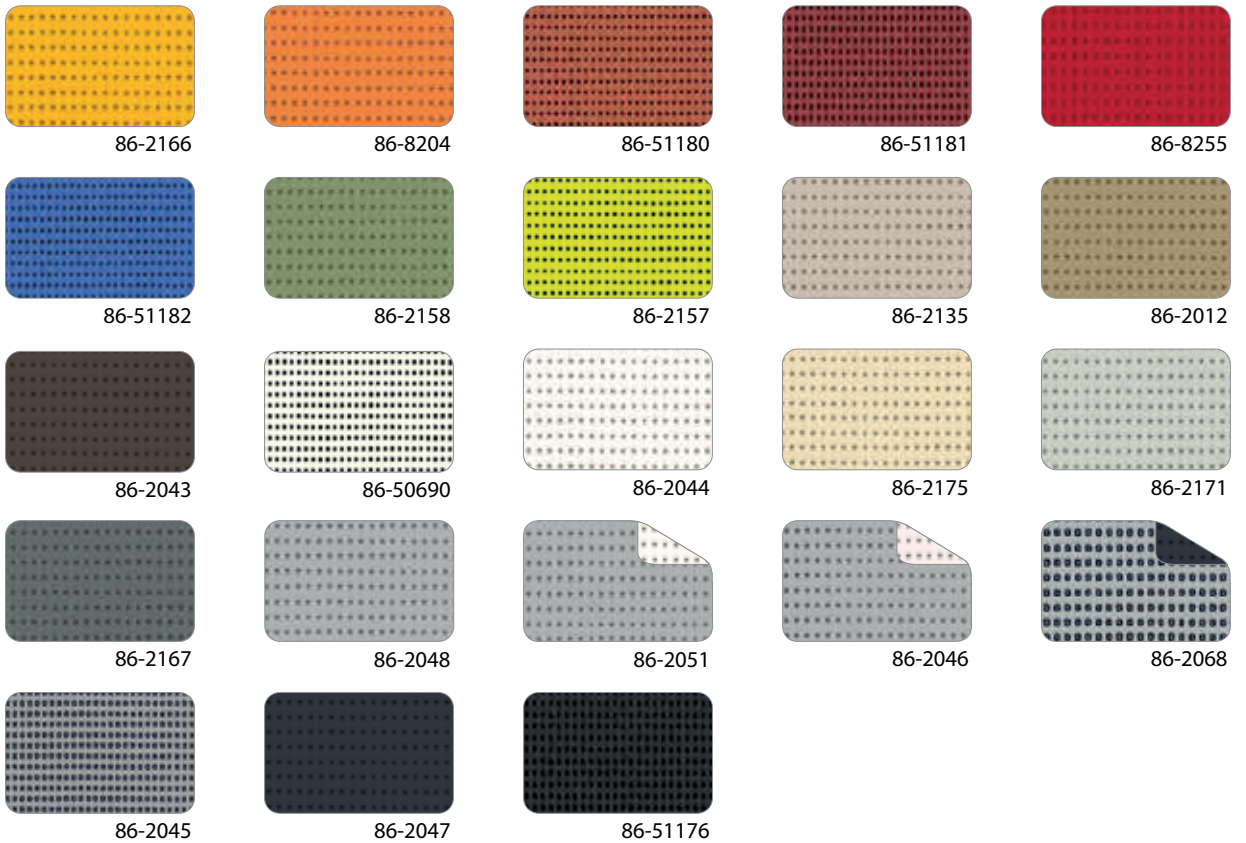


**new Deep black** 177 cm — 267 cm 92-51176



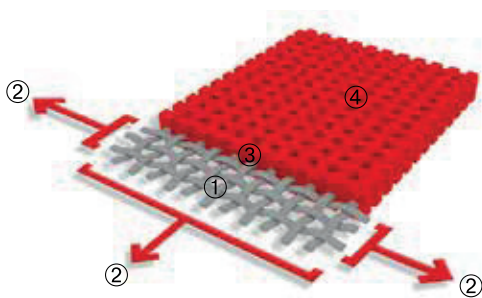


■ **Colours coordinated with Soltis Horizon 86**



■ **Exclusive Précontraint® technology**

This unique worldwide patented technology consists of maintaining the composite in bi-axial tension throughout the entire manufacturing cycle. It gives our materials outstanding performance, allowing them to surpass market standards in terms of dimensional stability, mechanical strength, coating thickness and flatness.



High tenacity polyester micro-cable reinforcement	①	Superior resistance to elongation and tearing
Coating under bi-axial tension, exerted in warp and weft	②	No deformation during implementation and use
Superior coating at the crest of the wires and anti-fouling surface treatment	③	Superior aesthetic and mechanical durability
Extreme flatness and low thickness	④	Smooth, easy to clean surface with small footprint and easy winding

## ■ Solar and light properties (according to EN 14501)

	Width (in cm)	TS	RS	AS	TV n-h	EN 13363-2* Glazing D	
						g <sub>tot</sub> <sup>e</sup>	g <sub>tot</sub> <sup>i</sup>
92-2012	177 267	7	30	63	6	0.04	0.24
92-2043		4	13	83	4	0.04	0.28
92-2044		19	68	13	17	0.07	0.11
92-2045		4	35	61	4	0.03	0.22
92-2046 A		12	46	42	10	0.05	0.18
92-2046 B		12	63	25	10	0.05	0.14
92-2047		5	8	87	5	0.04	0.28
92-2048		8	46	46	8	0.04	0.18
92-2051 A		12	49	39	11	0.06	0.17
92-2051 B		12	70	18	11	0.05	0.10
92-2068 A		4	34	62	4	0.03	0.22
92-2068 B		4	8	88	4	0.04	0.28
92-2074 A		4	37	59	4	0.03	0.21
92-2074 B		4	25	71	4	0.03	0.24
92-2135		11	46	43	8	0.04	0.19
92-2149		5	16	79	4	0.04	0.27
92-2157		15	51	34	10	0.05	0.20
92-2158		7	28	65	5	0.03	0.24
92-2160		11	36	53	5	0.04	0.24
92-2166		21	54	25	17	0.07	0.19
92-2167		6	19	75	5	0.04	0.26

	Width (in cm)	TS	RS	AS	TV n-h	EN 13363-2* Glazing D	
						g <sub>tot</sub> <sup>e</sup>	g <sub>tot</sub> <sup>i</sup>
92-2171		8	41	51	6	0.04	0.20
92-2175		19	65	16	17	0.07	0.14
<b>new</b> 92-8056		2	10	88	2	0.03	0.28
92-8204		21	45	34	11	0.06	0.23
92-8255		12	28	60	4	0.05	0.27
92-50265		9	49	42	6	0.04	0.18
92-50266		4	19	77	4	0.03	0.26
92-50272		12	55	33	9	0.05	0.16
92-50273		8	42	50	5	0.04	0.21
92-50274		8	35	57	4	0.04	0.24
<b>new</b> 92-50303		15	63	22	10	0.05	0.15
<b>new</b> 92-50843		13	62	25	10	0.05	0.14
<b>new</b> 92-50850		5	31	64	3	0.03	0.23
<b>new</b> 92-50690		17	73	10	15	0.06	0.10
<b>new</b> 92-51176		3	5	92	3	0.03	0.29
<b>new</b> 92-51177		3	18	79	3	0.03	0.26
<b>new</b> 92-51178		5	20	75	4	0.03	0.26
<b>new</b> 92-51179		6	29	65	4	0.03	0.24
<b>new</b> 92-51180		6	27	67	3	0.03	0.26
<b>new</b> 92-51181		4	17	79	3	0.03	0.28
<b>new</b> 92-51182		8	26	66	4	0.03	0.27

**TS**: Solar Transmission in %

**RS**: Solar Reflection in %

**AS**: Solar absorption in %

**TS + RS + AS** = 100% of the incident energy

**TV n-h**: Normal Visible light transmission - hemispherical in %

**A**: Aluminium surface exposed to the sun

**B**: Coloured surface exposed to the sun

**g<sub>tot</sub><sup>e</sup>**: External Solar Factor

**g<sub>tot</sub><sup>i</sup>**: Indoor Solar Factor

\* Detailed

EN 13363-2 method

Takes into account the spectral values of glazing transmission and reflection + blind complex for calculating the solar factor g<sub>tot</sub>.

Type "D" glazing: insulating double glazing with low emissivity on surface 2 (4 + 16 + 4; Argon filling) g = 0.32 - U = 1.1





WWW.BYMICHEL.NL

By Michèl B.V.  
De Hulst 19  
5807 EW Oostrum  
Nederland  
Tel. +31 478 746 000  
info@bymichel.nl